

SAFEGUARDING

AT LES BEAUCAMPS HIGH SCHOOL



A FUNDAMENTAL ASPECT OF SCHOOL LIFE IS THAT CHILDREN SHOULD FEEL SAFE AND SECURE. AT LES BEAUCAMPS HIGH SCHOOL WE CULTIVATE A STRONG SAFEGUARDING APPROACH.

CHILD PROTECTION

1

The head for child protection is Mrs Langlois who works alongside the other designated child protection officers; Mr Haines and Mrs King. All are level 3 trained. LBHS ensure all staff are level 2 trained and this is done on a rolling programme throughout the year.



2

ATTENDANCE

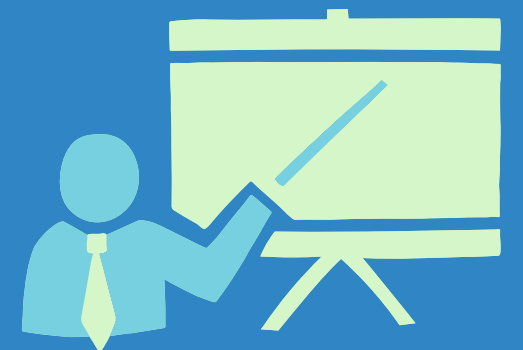
Our aim is; 1) to raise attendance for all pupils; 2) to promote the importance of attendance in improving well-being, safeguarding and outcomes; 3) to work collaboratively with families & outside agencies. Click [here](#) for our attendance policy.



3

APPROPRIATE TRAINING

ELSA Trained – Mr Howell, ELKAN Trained – Miss Domaille
First Aid Trained – Administration Team and teachers of PE
All staff are level 2 child protection trained



4

SINGLE CENTRAL REGISTER ('SCR')

The Single Central Register ensures thorough checks are in place for all staff and visitors working and in the company of children. Rigorous checks are conducted and updated regularly by the Principal.



5

SAFER RECRUITMENT

Mrs Langlois, Mr Haines, Mrs MacKrell, Mr Le Noury and Mrs Neild-Le Conte are fully trained in SAFER Recruitment. Keeping children safe underpins our recruitment process. All required checks take place before any appointments are made. Documents are always inspected with a laser pen.



6

PEER ON PEER ABUSE

All allegations are reported to DSL immediately where they will be recorded. If there is a suspected crime, DSL will contact the Police and/or MASH. Parents/Carers will be notified immediately. Students will be supported by senior staff and/or agencies. A risk assessment will be conducted by DSL and a support plan put in place for all children. PSHCE addresses and highlights this subject.



7

HIVE/INCLUSION BASE

An area in the school that provides support for emotional and well-being needs.



8

VISITORS TO SCHOOL

Lower entry doors are only accessible by keycard entry – visitors can only gain access to school via Reception. Upon arrival, all visitors are given a code of conduct booklet and a visitor badge; blue if they are on our SCR or red if not. Staff have their own staff badge with a photo with access granted based on their needs. Please click [here](#) to view a PDF version of our booklet.



SAFEGUARDING

AT LES BEAUCAMPS HIGH SCHOOL



A FUNDAMENTAL ASPECT OF SCHOOL LIFE IS THAT CHILDREN SHOULD FEEL SAFE AND SECURE.
AT LES BEAUCAMPS HIGH SCHOOL WE CULTIVATE A STRONG SAFEGUARDING APPROACH.

9

HEALTH & SAFETY

Internal and external annual Health & Safety audits are regularly carried out. Any issues are reported immediately to the relevant person.



10

STAFF CONDUCT

All staff must wear a lanyard whilst on the school premises. To ensure our approach to safekeeping is robust, all staff know it is their duty to report any concerns to the child protection officers as soon as possible via a record of concern form.



11

ONLINE SAFETY

83% of children know what to do if they feel unsafe online (survey conducted September 2022). Students can access staff via Google Mail. Online code of conduct for children and parents. Online safety to be revisited at the start of every unit in ICT and is covered in PSHCE assemblies.



12

PSHCE CURRICULUM

Our PSHCE curriculum covers issues relating to safeguarding through lesson content, SHARE lessons from the SHARE team and other outside agencies. The curriculum is also flexible to respond to any arising needs.



13

FIRE DRILLS

Fire drills are conducted at the start of every term to ensure everyone is fully aware of the procedure, exit routes, assembly points and fire marshalls. Staff are trained and there is clear signage around the building.



14

POLICY

Please click [here](#) to view our Safeguarding and Child Protection Policy.



**MRS
LANGLOIS**
SCPO



**MR
HAIMES**
Deputy SCPO



**MRS
KING**
Deputy SCPO